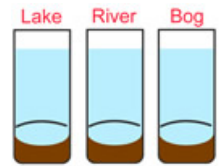


Turbidity Task Card

Turbidity: is a measure of the amount of suspended particles in a water sample.

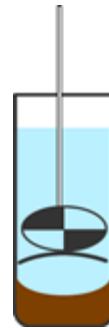
1. Measure the turbidity of the three water samples. One sample is from the **Lake**, one is from the **River** and the third is from the **Bog**.



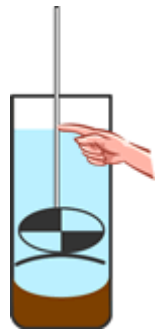
2. Stir each sample.



3. Slowly lower the Secchi disk into the water (**Lake**) sample until you can no longer see it while looking straight down into the water.



4. When you can no longer see the Secchi disk, pinch the string at the surface of the water.



5. Keeping your fingers pinched, pull out the Secchi disk out of the water.

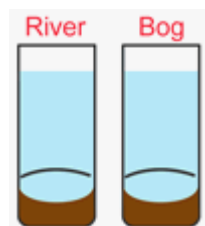
6. Measure the length of the string between the Secchi disk and your fingers.



7. Record this data on to your data sheet.



8. Repeat this process for the other two water samples.



BLM 1.3.a